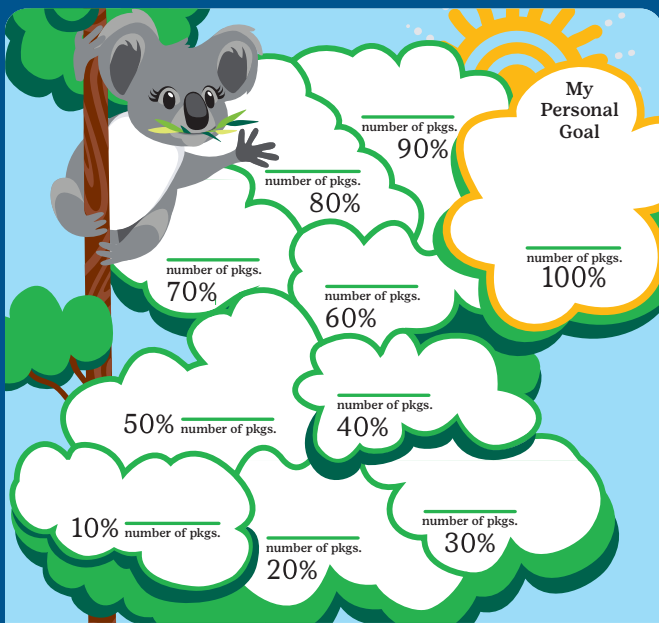


# Girl Scouts of Utah 2022 Girl Rewards



## How high can you climb?

Write your personal cookie package goal in the space above 100%. Include your smaller goals along the way. (Adults can help if you need it.) Color in each area as you make your way to the top!



**Climb with Courage Theme Patch**  
50+ pkgs



**Cookie Decals**  
75+ pkgs



**150+ Patch**  
150+ pkgs



**Koala Bracelet**  
250+ pkgs



**300+ Bar Patch**  
300+ pkgs



**Cowabunga Bay Cookie Celebration**  
350+ pkgs



**Eco Crossbody Tote and 500+ Bar Patch**  
500+ pkgs



**Koala Slipper Socks and 800+ Bar Patch**  
800+ pkgs



**10" Koala Plush and 900+ Bar Patch**  
900+ pkgs



**Design Your Own Vans Backpack or Shoes and 1000+ Bar Patch**  
1000+ pkgs



**Camp Duffle Bag**  
1500+ pkgs



**Samoas Hoodie**  
2000+ pkgs



**Oculus Quest 2 All-in-one VR Headset or AirPods Pro**  
2500+ pkgs



**Super Patch**  
3000+ pkgs



**Laptop and programming experience**  
4000+ pkgs



**NYC Disney on Broadway 3 nights/4 days Date TBD**  
(includes airfare, hotel, 2 Broadway shows, exclusive workshop and meals for the girl)  
5500+ pkgs

## Patch Rockers

Earn all 4 to create a tree.



## Troop Initial Order Rewards



Troops with a PGA of 350+ on initial order will receive **2022 Bar Patch and a Climb with Courage T-shirt** for each girl who submitted an initial order and the TPM

## Digital Cookie Rewards



**Cookie Techie Patch**  
20+ emails sent by January 30, 2022



**Clip-On Koala**  
Upload a Digital Cookie Video by January 30, 2022

## Gift of Caring Rewards



**Cooling Fabric Bandana**  
100+ pkgs



**Bag Tag**  
50+ pkgs

## Goal Getter Rewards

Pkgs sold from Jan 31 - Feb 25



**Goal Getter Patch**  
50+ pkgs



**Water Bottle**  
100+ pkgs

## Booth Sales Patch



Available at the council shop while supplies last.

## Crossover Patch



**2021 Fall/2022 Cookie Patch**  
Girl must meet the 2021 Fall Program criteria and sell 400+ packages of cookies.

## EARN ACTIVITY CREDITS

Earn \$12.50 for every 50 packages sold from 50-349 packages, and \$15 for every 50 packages sold at 350 packages and above. Redeemable for camp, council sponsored events, Destinations, girl membership registration fees and shop merchandise. (more info at <http://www.gsutah.org>)

## ALL REWARDS ARE CUMULATIVE

Council reserves the right to replace an item of equal or higher value. Make/Model/Color may vary.