

## Please label your belongings

### Clothing

Closed-toed, closed-heeled shoes (1)  
Warm sweater and/or sweatshirt (1)  
Pants & shorts (1 pair each depending on weather)  
T-shirts (2)  
Long sleeved shirt (1)  
Underwear (2)

Socks (2-3)  
Hat with brim  
Knit hat (depending on weather)  
Rain Gear (waterproof jacket or poncho)  
Warm pajamas (1)  
Warm coat

### Camp Gear

Sleeping bag rated to 20 degrees or cooler  
Pillow  
Warm blanket or fleece liner  
**24-32 ounce durable water bottle**

Sunglasses  
Backpack or daypack  
Flashlight with extra batteries

### Toiletries

Toothbrush & Toothpaste  
Hairbrush/comb  
Deodorant

Sunscreen & Lip Balm (SPF 15+)  
Insect repellent  
Sanitary supplies

### Optional Equipment

Camera  
Pen/Pencil

Stuffed animal  
Book

### Items to Leave at Home

Candy, gum, food or soda  
Curling irons, blow dryers, straighteners, etc.  
Items packaged in glass containers

iPods, MP3 players, CD players, etc.  
iPads, Kindles, Nooks, and other electronic devices  
Cell phones

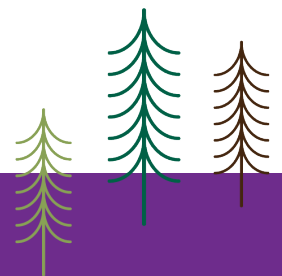
**Personal sports equipment** (archery equipment, climbing gear, lifejackets, riding helmets, etc.)

**Animals** (your pets will do much better at your home than in the camp environment)

**Electronic items** can easily be damaged in the camp environment.

### Weather and Special Packing Considerations

Please note it may be quite a bit cooler at camp than in the Salt Lake valley so plan accordingly based on the year.



## Camp Guidelines

### Girls and Adults

- Observe the Girl Scout Law and Promise (including being respectful of others' belongings).
- Use the buddy system.
- Walk in camp.
- Wear sturdy, closed-toed and closed-heeled shoes and socks at all times; no sandals.
- Quiet hours are from 10 p.m. to 7 a.m.
- Snow piles by buildings are very dangerous and are off limits.
- Please eat only at the tables and not on the couches or in the sleeping areas. Please leave gum at home.
- Please don't use paint or use markers on the dining tables without covering them.
- No leather working on the dining hall tables.

### Adults

- Adults must supervise their girls at all times (within sight and hearing distance).
- Trefoil Ranch is a firearm-, mace-, and weapon-free environment.
- In case of emergency, notify the Community Event or Outdoor Representative before leaving camp.
- Trefoil Ranch is an alcohol-free and smoke-free environment. Those choosing to smoke must walk down the road and be on the opposite side of the camp gates.
- Family pets should be left at home.

