

Delegate Representative Training

L.E.A.P.

INTO

2020

LEADERSHIP SUMMIT



GIRL SCOUTS OF UTAH

Service Unit Delegate Representative

Position Summary:

- Support girl and adult members who are serving as delegates in their service unit
- Be an active member of the service unit leadership team
- Ensure that the allotted number of delegate and alternate delegate positions are filled in order to represent the service unit in voting matters
- Ensure that all delegates in the service unit complete training and submit the position commitment form
- Serve as a council delegate

Service Unit Delegate Representative

Position Responsibilities:

- Submit up to date information to council regarding the roster of those who are serving as delegates and alternates in their service unit
- Complete delegate training as is required to be eligible to vote and mentor other service unit delegates
- Participate in Service Unit Leadership Team meetings
- Along with all Council Delegates, attend Town Hall and Annual Meetings

Service Unit Delegate Representative

Position Requirements:

- Girls who serve as Delegates or Alternate Delegates must be at least 14 years old.
- It is recommended that for each girl delegate, there is a corresponding adult delegate.
- The term for this position, and all council delegates, is two years. As such the delegate representative must be able to commit to two years of service in this position.

Council Delegates

While the Delegate Representative serves on the Service Unit Leadership Team, additional delegates that represent the service unit are not required to do so. The Delegate Representative, Delegates and Alternate Delegates are referred to collectively as **Council Delegates**.

Council Delegates are representatives of their local service units and are responsible to the Girl Scouts of Utah council.

Council Delegates act as the communication link between their service unit and GSU's Board of Directors and CEO and gather information to share with their service unit by attending Town Hall meetings, Annual Meeting, and through regular email updates from Council.

Council Delegates

How many delegates is each service unit allotted?

- All service units are allotted at least 2 delegates
- Service units whose **girl membership** exceeds 300 are allocated an additional delegate per each 100 girl members thereafter

Council Delegates

What is an Alternate Delegate?

- Along with electing Delegates, service units should also elect **Alternate Delegates** to represent their service unit when a Delegate is unable to attend Town Hall or Annual Meeting.
- Alternate Delegates are required to complete the same training as Delegates.

The Crucial Role of Council Delegates

Council Delegates are crucial because...

- If there is not a quorum of delegates present at Annual Meeting, no GSU Council business or voting can occur.
- According to GSU bylaws, in order to fulfill quorum requirements, **a Delegate from at least 51% of the council's service units must be present.**

Service Unit Delegate Roll Call		
✓ Alta	✓ Hunter Valley	✓ Sanpete
✓ Box Elder	✓ Jordan	✓ Scenic View
✓ Cache	✓ Juniper	✓ South Davis
✓ Carbon	✓ Lakeview	✓ Suncrest
✓ Copper Meadows	✓ Millcreek	✓ Sunnyside
✓ Crystal View	✓ Mount Olympus	✓ Sunrise
✓ Dixie	✓ Navajo Lake	✓ Timpanogos
✓ Fish Lake	✓ Nebo Shadows	✓ Tooele
✓ Four Valley	✓ Oquirrh	✓ Trefoil
✓ Francis Peak	✓ Red Rocks	✓ Uintah Basin
✓ Frontier	✓ Sandy	✓ Wasatch

Annual Meeting

What is Annual Meeting?

- All non-profits, including GSU are required by law to hold an Annual Meeting to update their stakeholders
- Annual Meeting provides a forum for council business for which a vote from delegates is required

Annual Meeting

What happens at Annual Meeting?

- Delegates sign-in upon arrival
- Flag ceremony is held by a volunteering troop to open the meeting
- Role call is conducted by National Delegates to determine which service units are in attendance
- Governance report is given by the Board Chair
- Operations report is given by the CEO
- Treasurer's report is given by the Board Treasurer
- Election by voting from Delegates occurs
- If the vote is unanimous, the slate of nominees for Board, BDC and National Delegates is approved
- Other business occurs as needed
- Retrieval of the Colors (flags) by the volunteering troop
- Meeting adjourns

The Slate

What is the slate?

- The slate is the final list of candidates for Board, Board Development Committee, and National Delegate service.
- Candidates on the slate are selected through a process set by the BDC.
- The slate of candidates represents a balance of skill-sets and expertise that will best meet the needs of council
- The slate is presented at annual meeting for voting members to approve as a whole, or as a “single slate”

The Slate

Why is a “single” slate of nominees presented at Annual Meeting?

- The slate represents a carefully considered balance of candidates to meet the current needs of the Council.
- The BDC searches the Utah community at large for individuals who support the values and purposes of Girl Scouts and are willing to volunteer their time.
- The work of assembling the slate takes the BDC at least one full year to complete and begins following Annual Meeting.

National Delegates

- Each council elects National Delegates to serve as a major link to GSUSA
- National Delegates are chosen by application and interview with the Board Development Committee, and are then elected at Annual Meeting by Council Delegates to serve a 3 year term in preparation for National Session
- All of councils' National Delegates make up GSUSA's National Council
- National Council determines the general policy lines of the Girl Scout Movement
- The National Council elects the National Board and National Board Development Committee

National Board of Directors

- Establishes and charters Girl Scout Councils
- Provides strategic leadership and direction to the GS Movement
- Manages the affairs of the corporation between triennial National Council Sessions

Voting Members of GSU

- Council Delegates
- National Delegates
- Board of Directors
- Board Development Committee

Governance in Girl Scouts

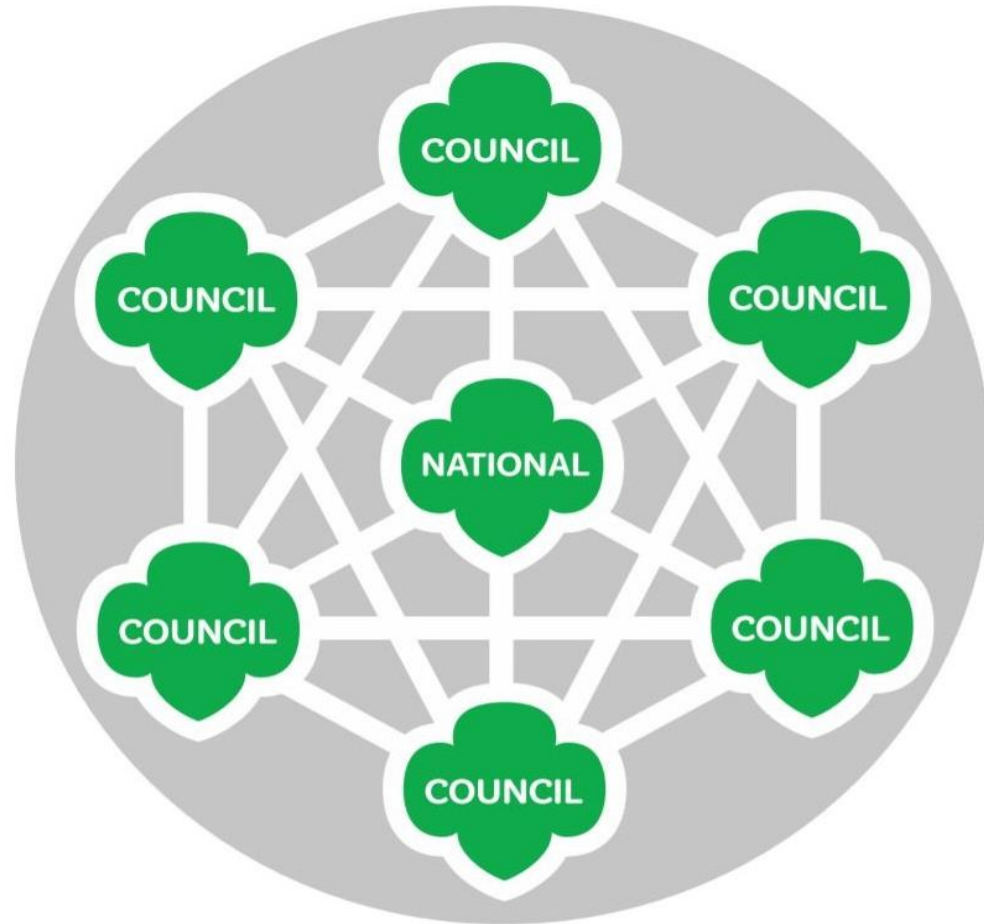
- The democratic process by which policy decisions are made for the Girl Scout Movement
- The election of Board officers and members, and Board Development Committee members, and National delegates by authorized representatives

Interdependence: GSU and GSUSA

GSU



Councils

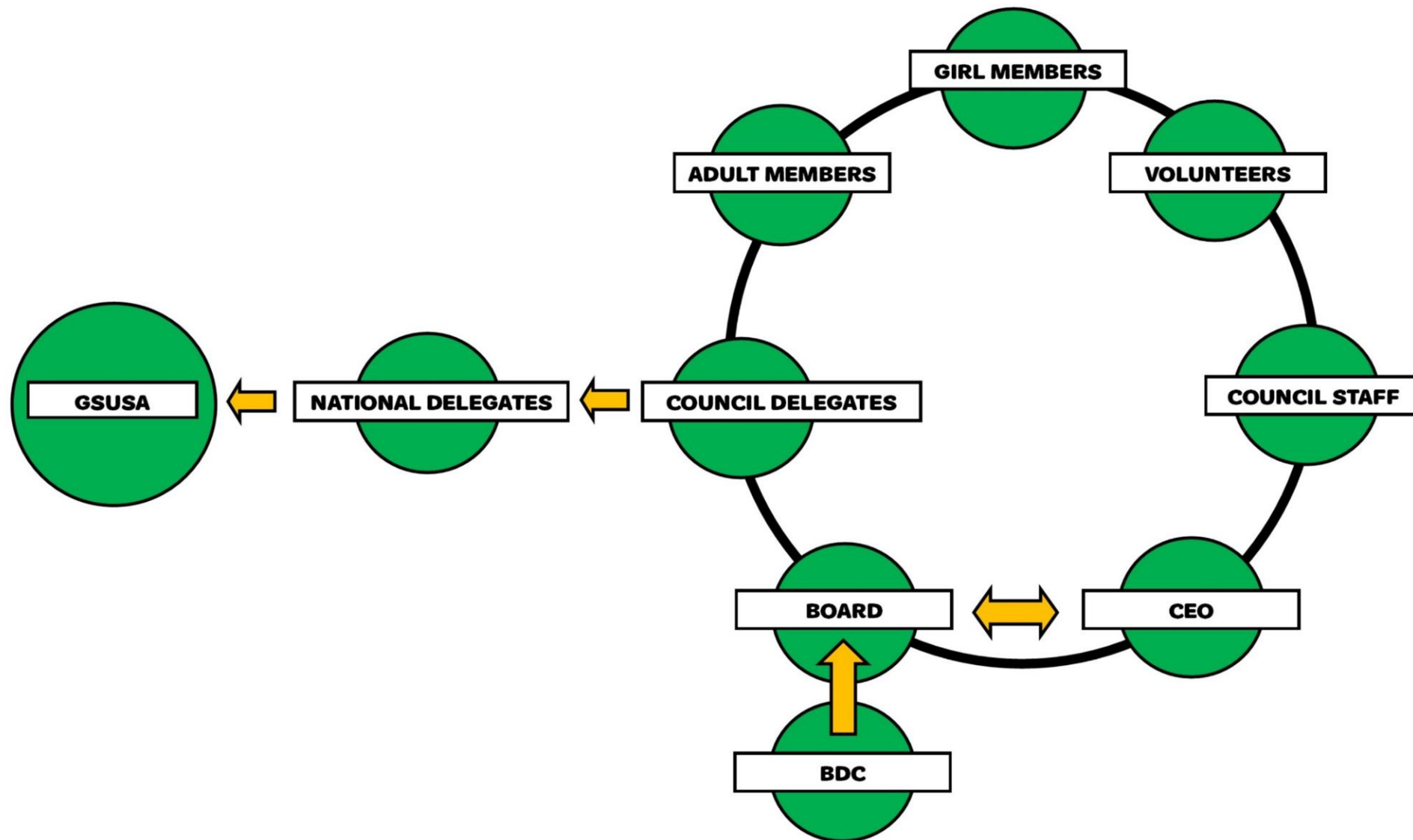


GSUSA



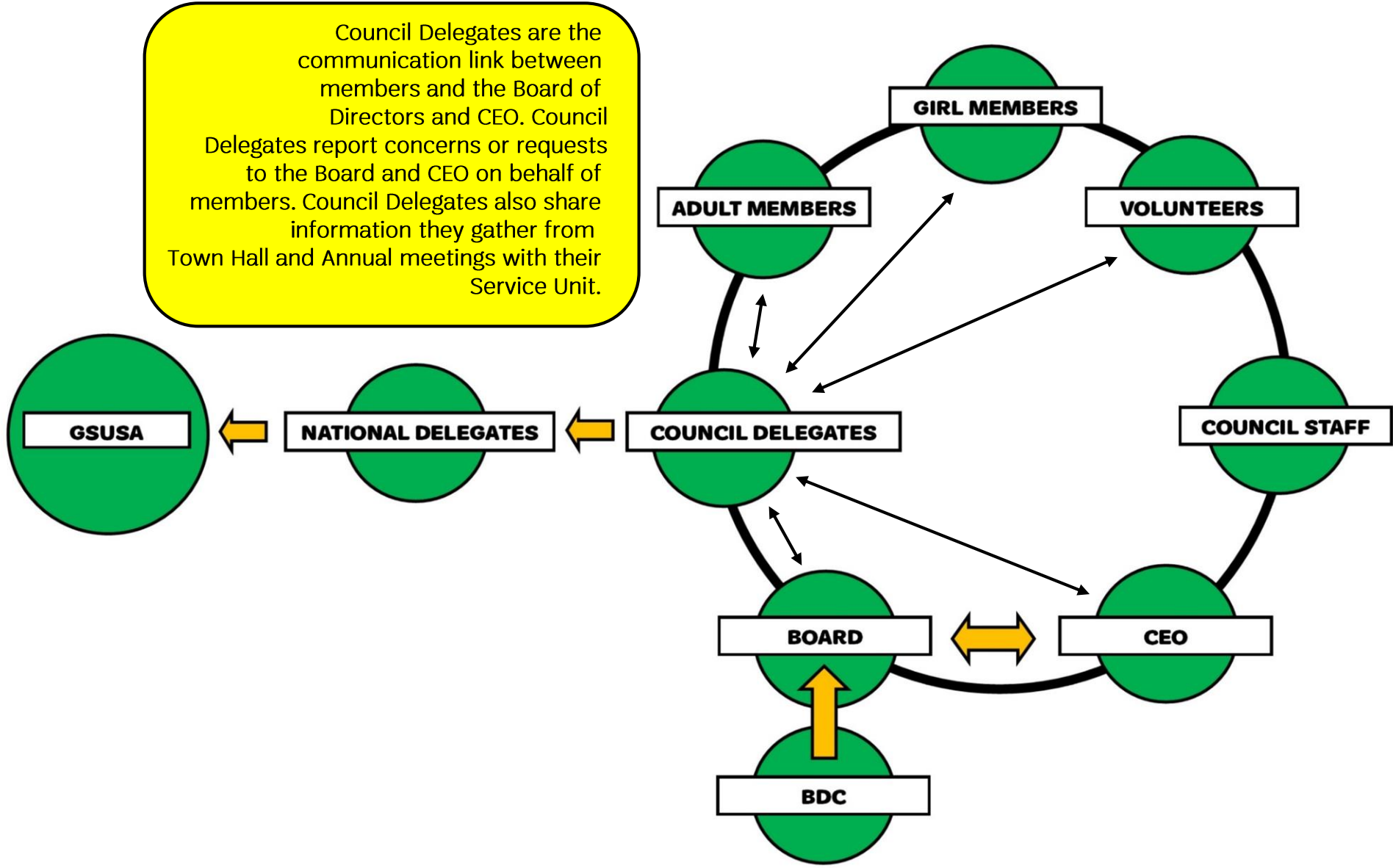
National

Girl Scouts Governance Structure

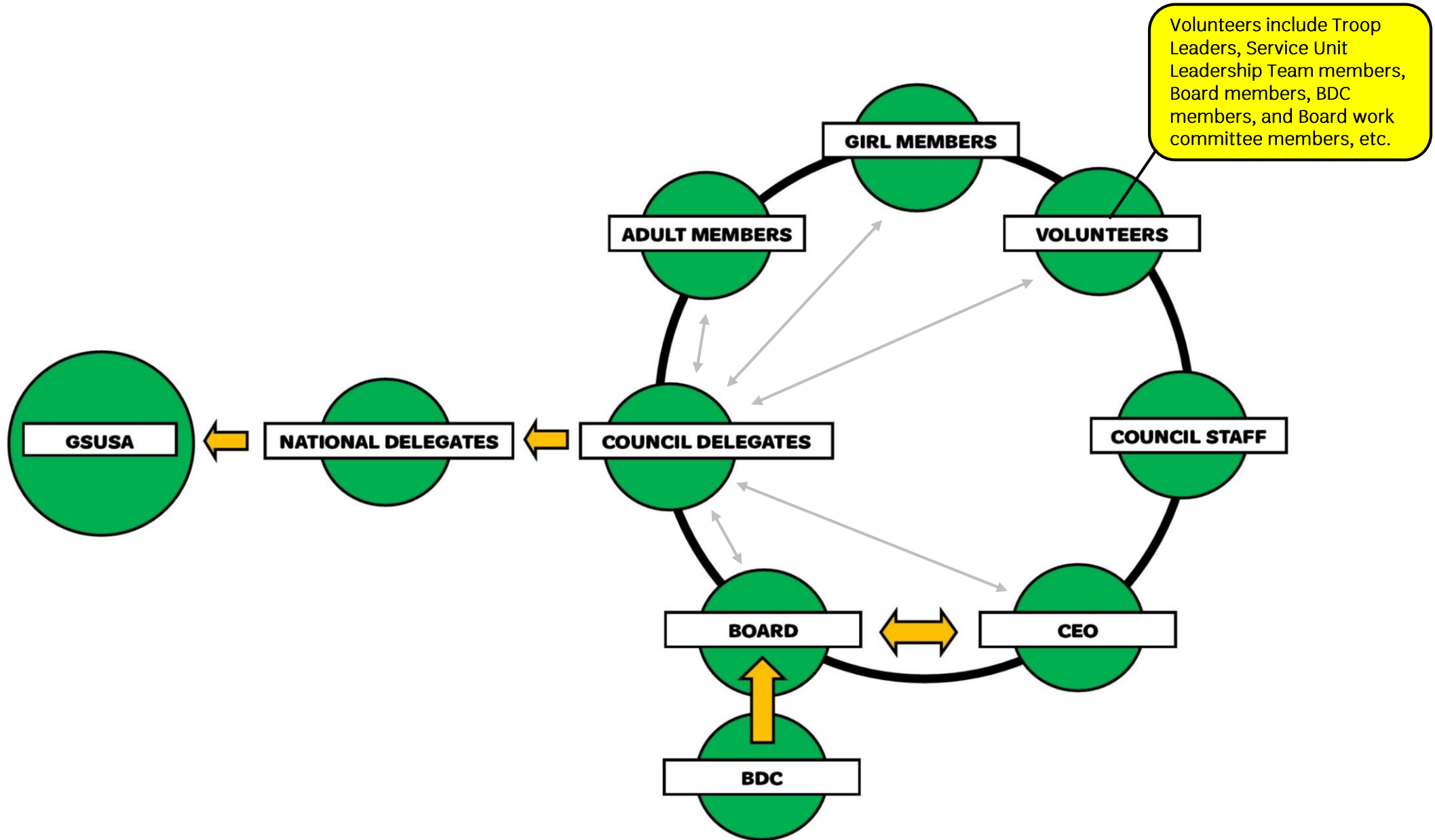


Girl Scouts Governance Structure

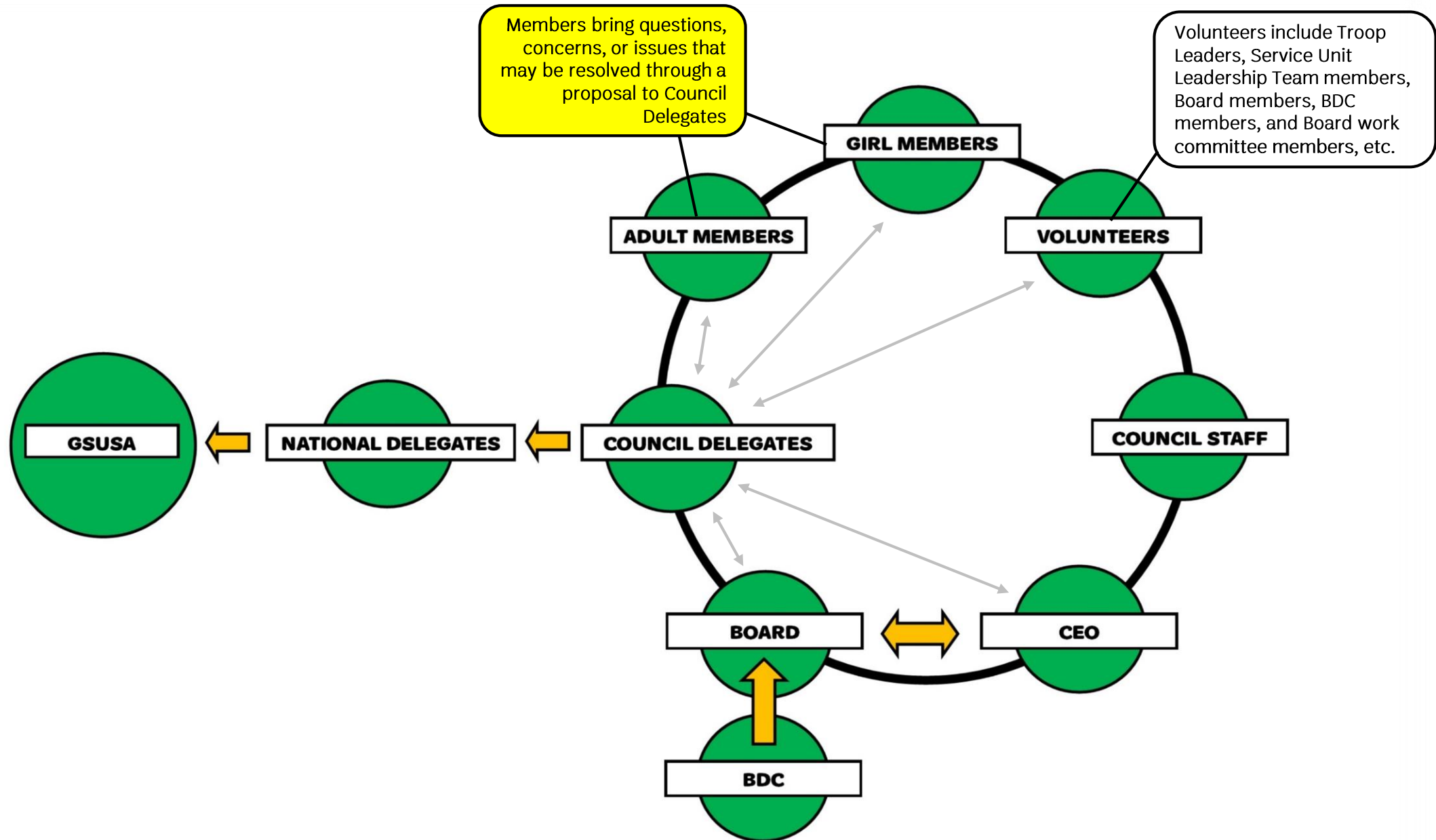
Council Delegates are the communication link between members and the Board of Directors and CEO. Council Delegates report concerns or requests to the Board and CEO on behalf of members. Council Delegates also share information they gather from Town Hall and Annual meetings with their Service Unit.



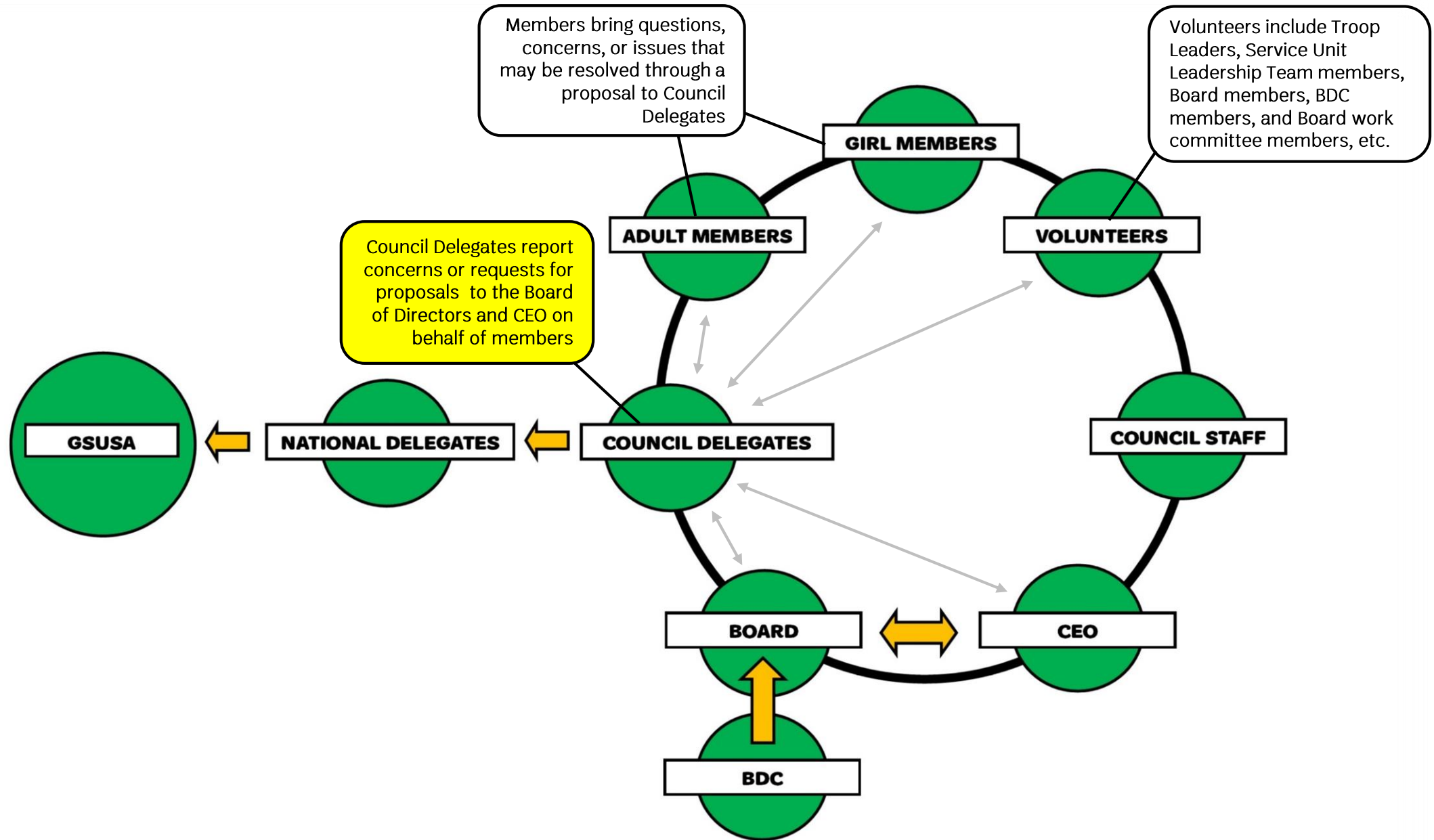
Girl Scouts Governance Structure



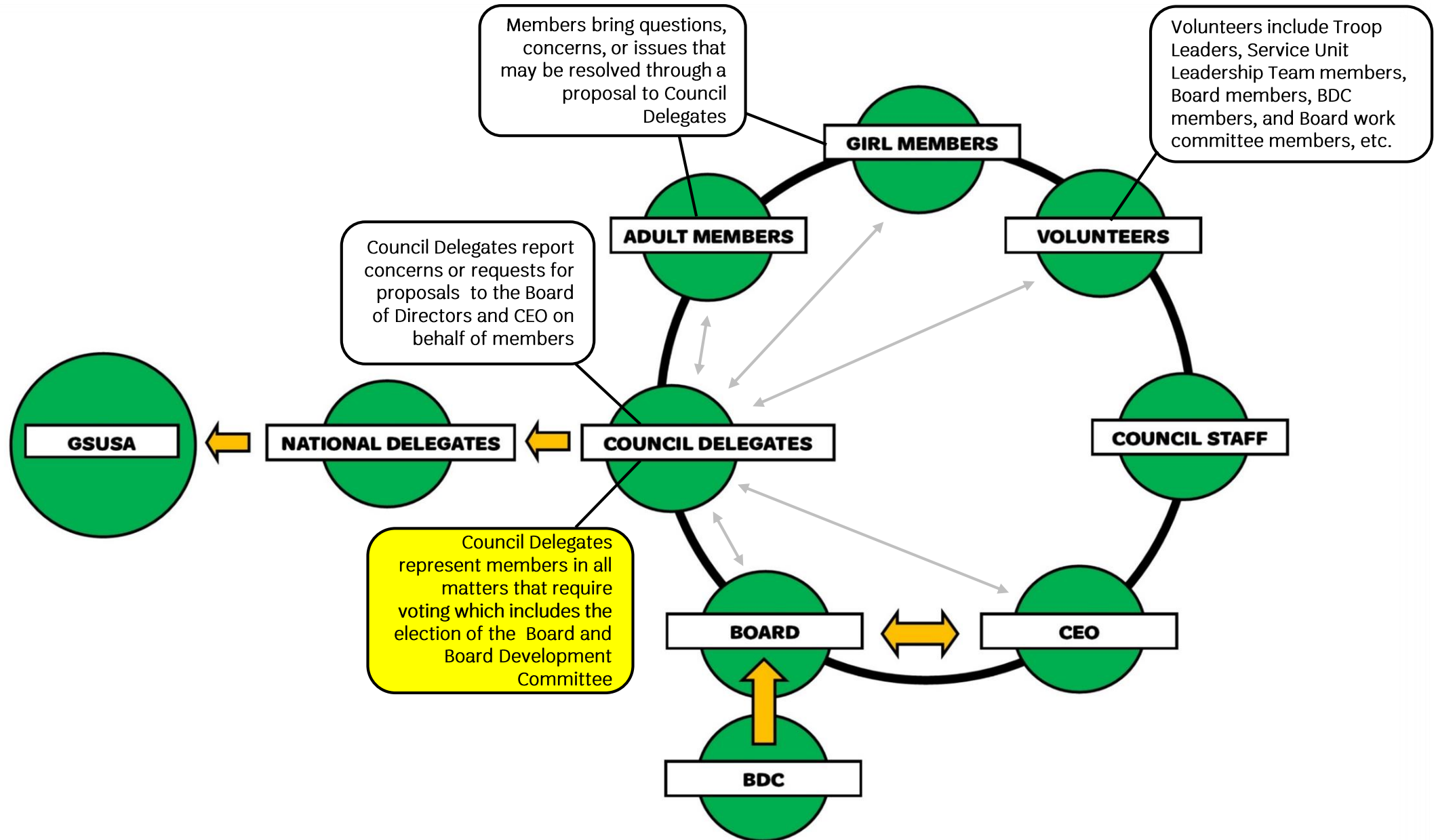
Girl Scouts Governance Structure



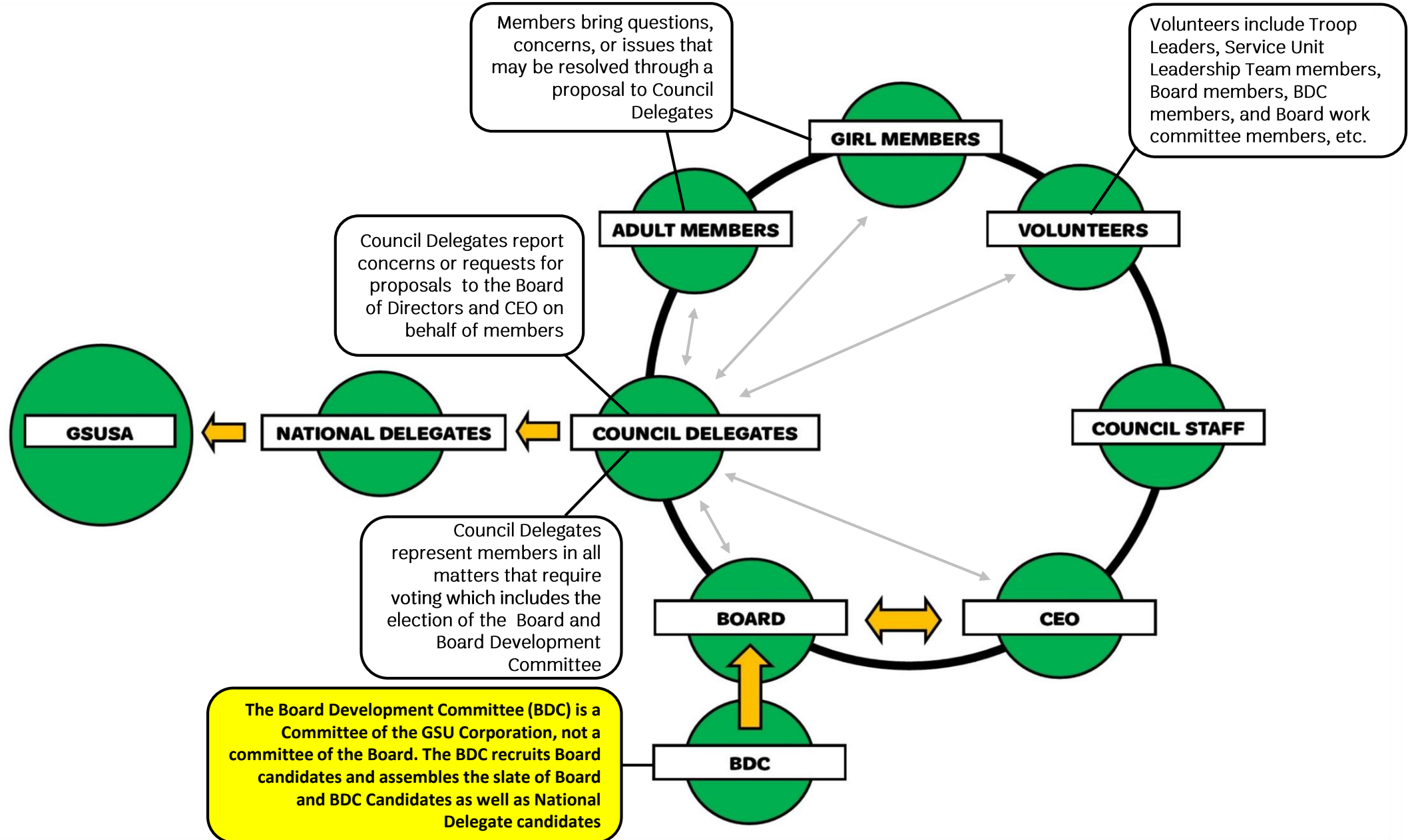
Girl Scouts Governance Structure



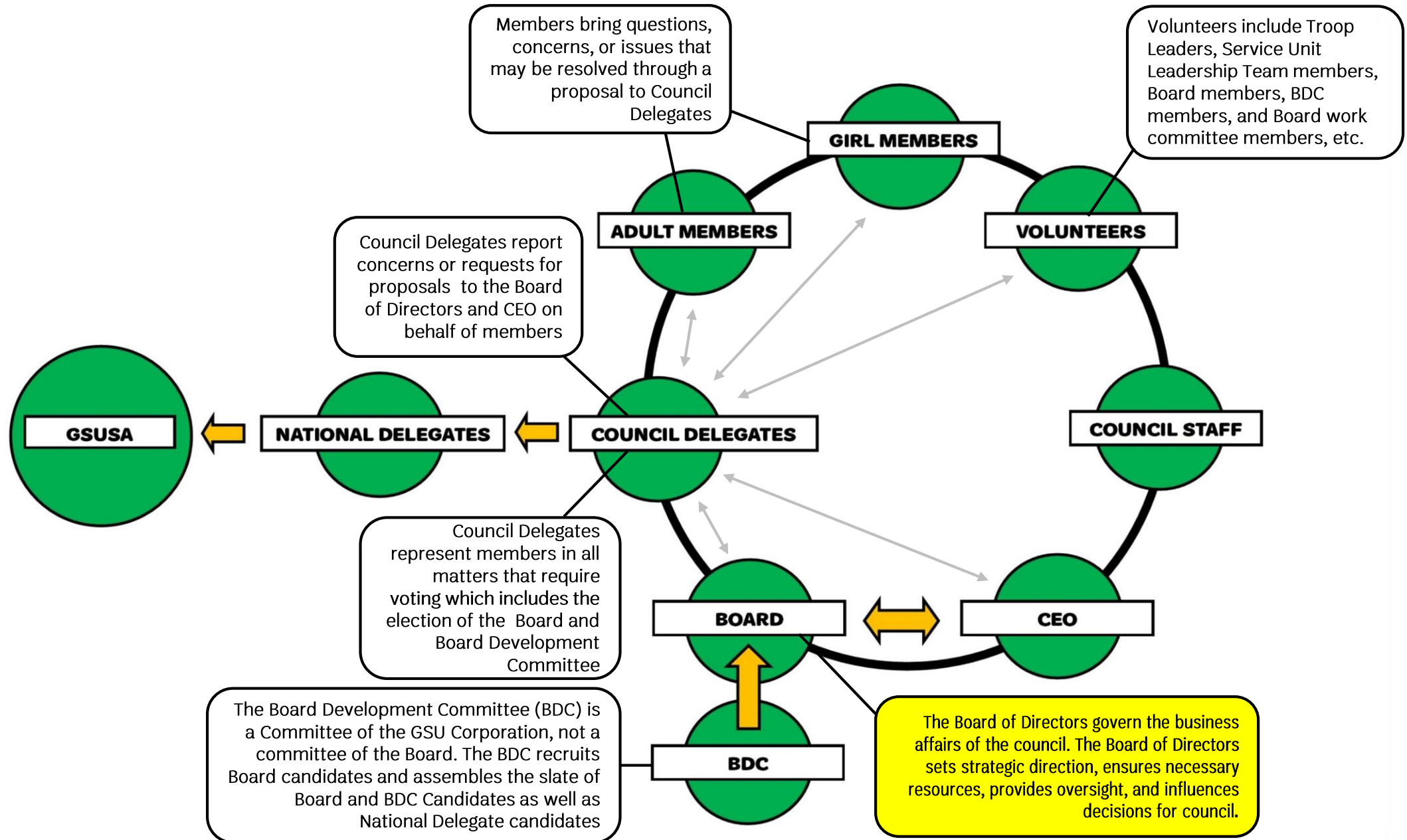
Girl Scouts Governance Structure



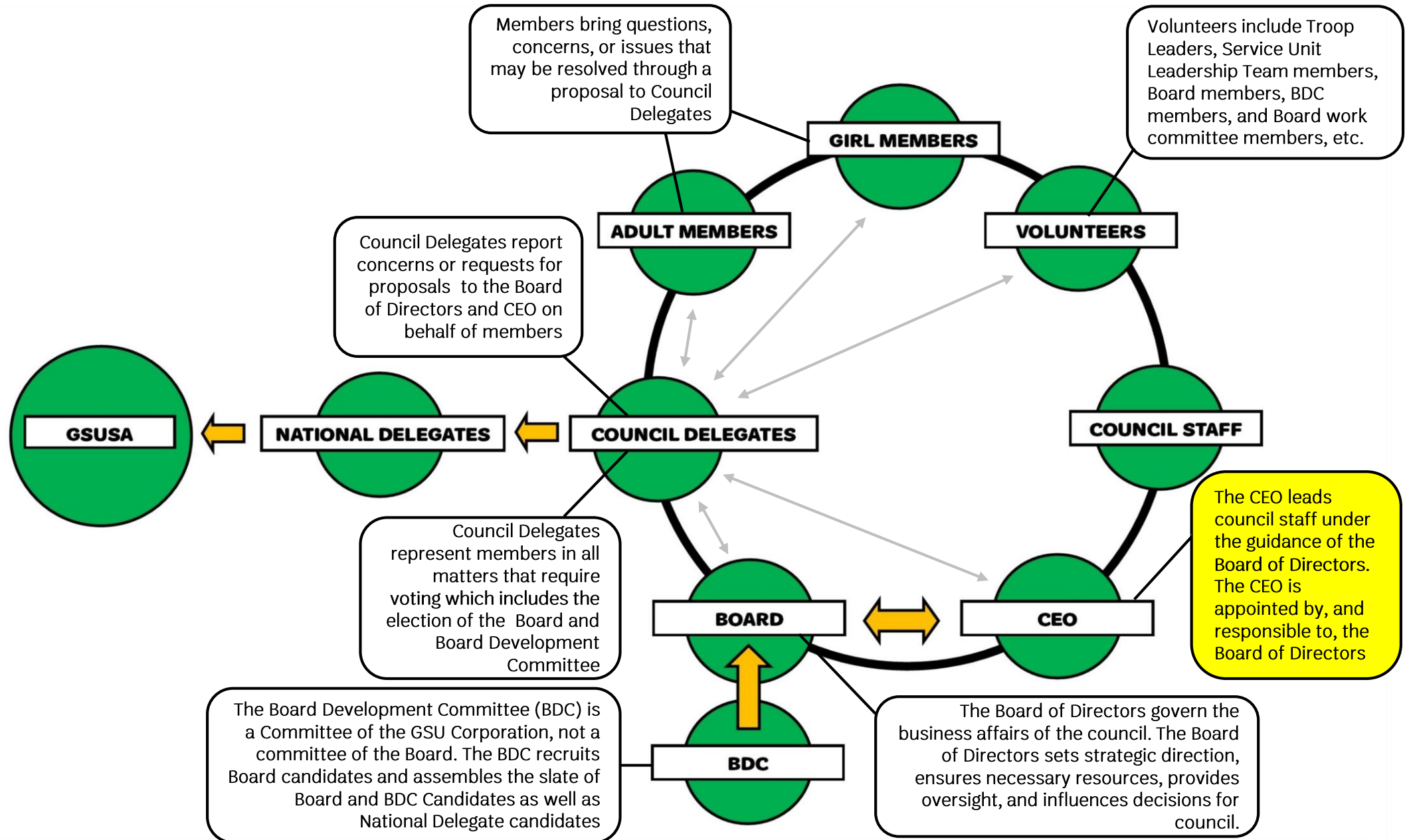
Girl Scouts Governance Structure



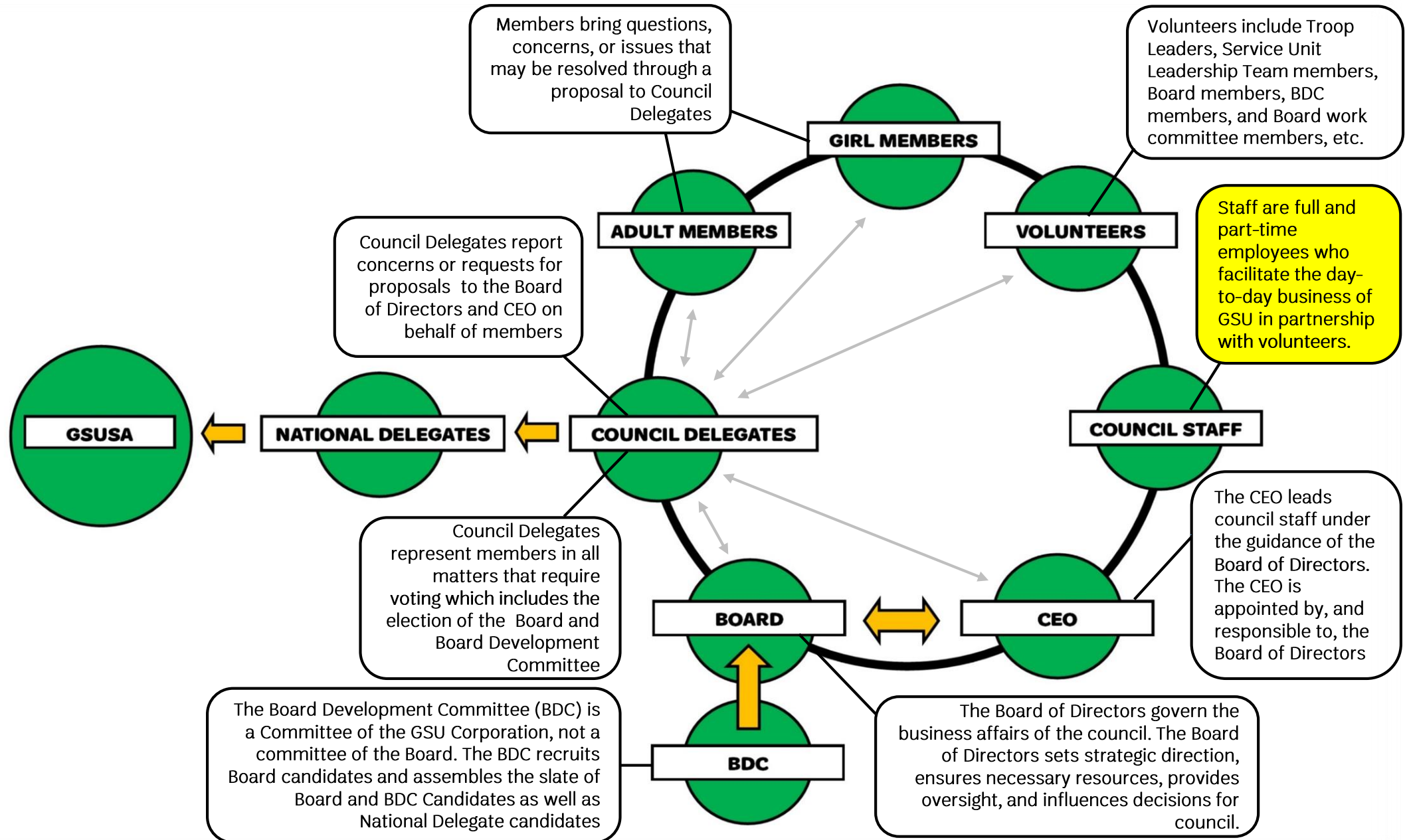
Girl Scouts Governance Structure



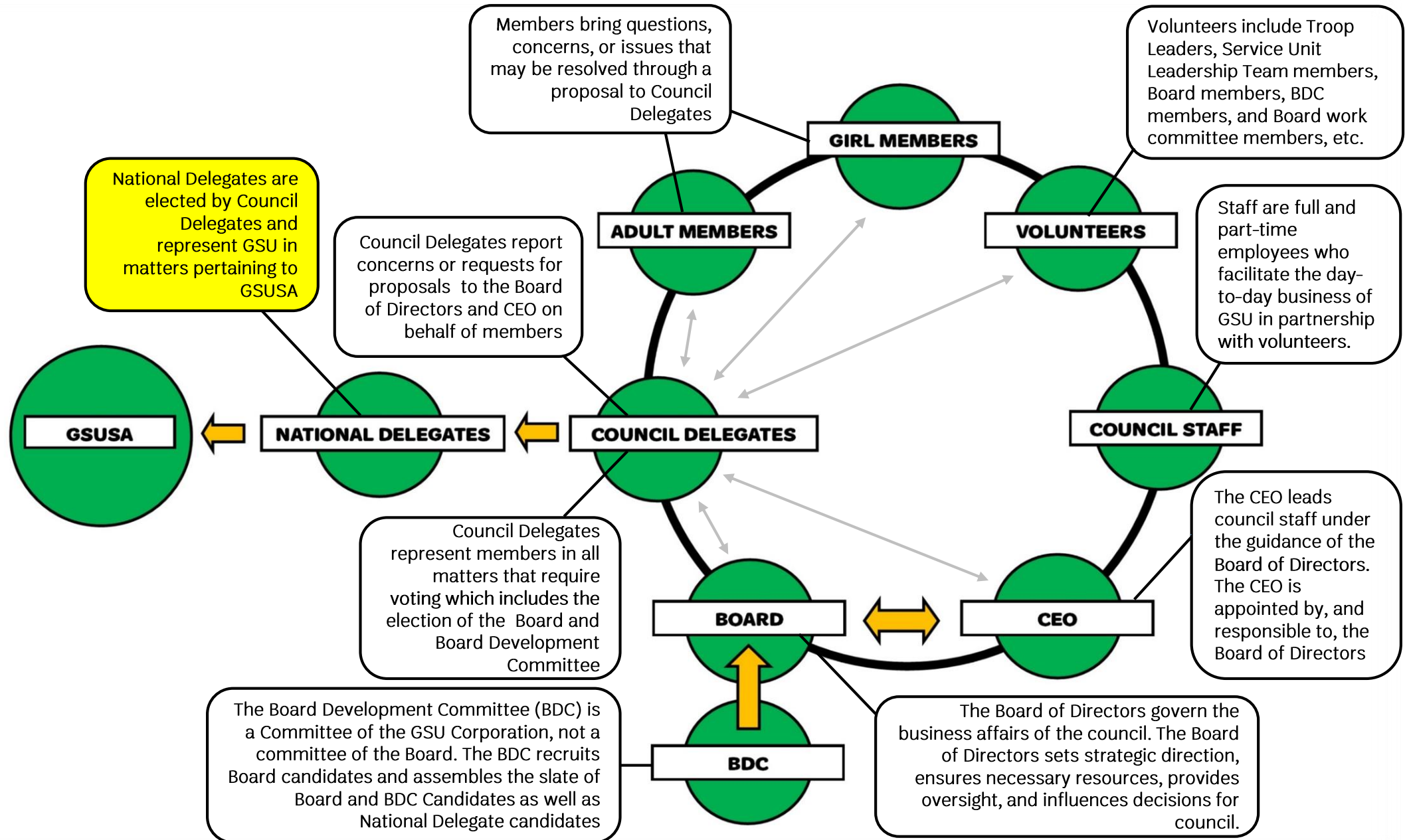
Girl Scouts Governance Structure



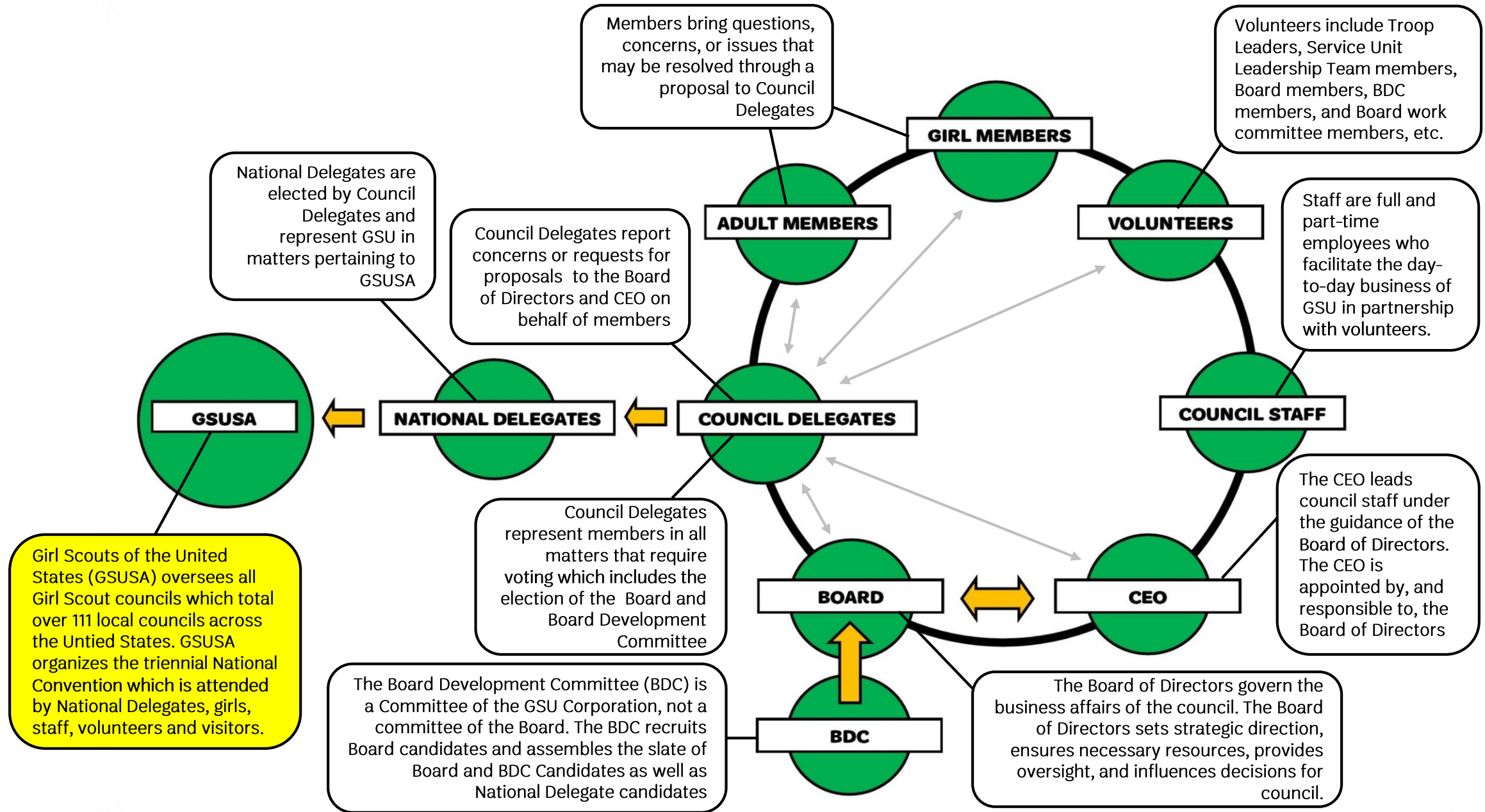
Girl Scouts Governance Structure



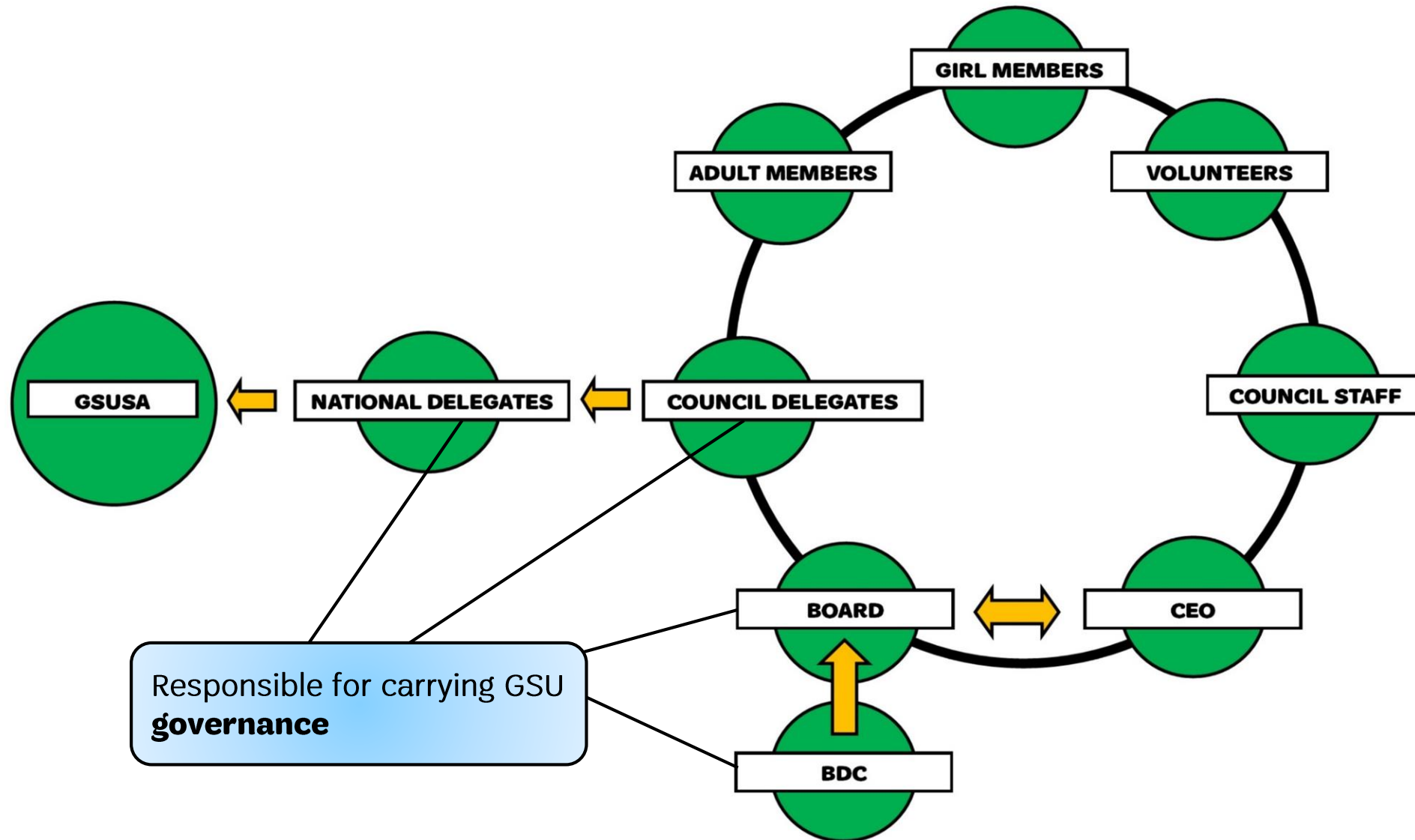
Girl Scouts Governance Structure



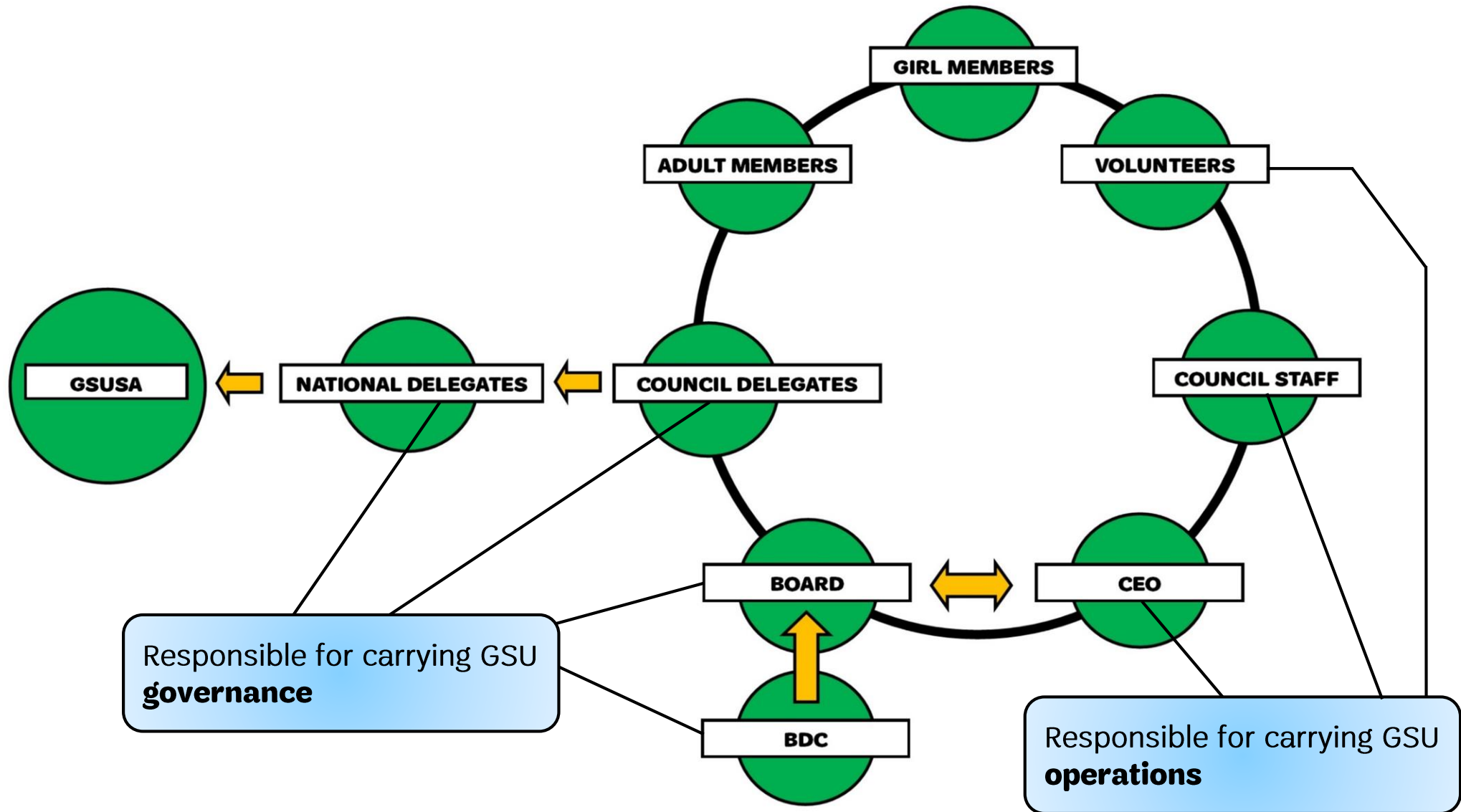
Girl Scouts Governance Structure



Girl Scouts Governance Structure



Girl Scouts Governance Structure



Governance vs. Operations

Governance

Operations

Big Picture ↔ Day-to-Day Management

Sets Policies ↔ Implements Policies

Guides Vision ↔ Realizes Vision

Develops Strategy ↔ Executes Strategy

Provides Fiduciary Oversight ↔ Administers the Budget

Voting Members ↔ Non Voting Members

Important Meeting Dates

- **Town Meetings: 2020**
 - Tuesday, February 4th at 6:00pm—American Fork
 - Wednesday, February 5th at 6:00pm—Salt Lake City
 - Thursday, February 6th at 6:00 pm—Ogden
- **Annual Meeting: 2020**
 - Saturday April 25th—Salt Lake

Questions & Answers

L.E.A.P.

INTO

2020

LEADERSHIP SUMMIT



GIRL SCOUTS OF UTAH

Questions & Answers

Q: Who is eligible to be a Service Unit Delegate?

A: Any Girl Scout who is at least 14 years old, and any adult member.

Questions & Answers

Q: What percentage of service units must have a delegate present at Annual Meeting in order to hold a vote?

A: 51%

Questions & Answers

Q: True or False? To be a council delegate, one must also serve on the service unit leadership team.

A: False. Only the Service Unit Delegate Representative is required to serve on the Service Unit Leadership Team. Additional delegates representing a service unit do not have to be on the SU Leadership team.

Questions & Answers

Q: True or False? Council staff are voting members.

A: False. The only voting members of council are Delegates, Board of Directors and Board Development Committee.

Questions & Answers

Q: What if I am unable to attend Town Hall or Annual Meeting?

A: Each service unit should elect at least 2 **Alternate Delegates** to vote on behalf of their service unit if a Delegate is unable to attend.

Questions & Answers

Q: How long is 1 term for council delegates?

A: 2 years.

Discussion, Experience Sharing and Questions

L.E.A.P.

INTO

2020

LEADERSHIP SUMMIT



GIRL SCOUTS OF UTAH

Thank You!

L.E.A.P.

INTO

2020

LEADERSHIP SUMMIT



GIRL SCOUTS OF UTAH